

# PROOF THE ANCIENT ORDER'S LASER-RAY SYSTEM IS OVER 150 YEARS OLD

● MARY SHELLEY                      MARY  
AR S EL = (LASER)              ARY = (RAY)

● MARY SHELLEY lived from 1797 to 1851. She wrote the book "FRANKENSTEIN". Her name contains the words "laser" and "ray". And look at her surname Shelley.

● "Shelley" is "Hell" and "s-e-y", which adds to  $19+5+25=49$ . "Shelley" = "Hell" + 49. 4/9 is April 9, the 99th day of the year. Laser adds to 55 and Ray adds to 44. Laser Ray = 99. 4/9 is the ANCIENT ORDER code for April 9th, the 99th day, the same as Laser Ray(99). The name "Shelley" is "Hell" + 49 or "Hell Ray".

● FRANKENSTEIN is about a monster that resembles a human being and who is made from the parts of other people. The Frankenstein monster is one person that is a collection of various other people. Dr. Frankenstein has his creation in a tower. On top of that tower is a lightning rod.

● The electricity is coming through the lightning rod from an electrical storm. That electricity then energizes the Frankenstein monster. The Frankenstein 'collection of people' is brought to life by ELECTRICITY.

● The electricity represents the "electrical oscillations" in the brain, which are altered to change people's impulses. Those people, just like the Frankenstein monster, are not what they originally were. They will follow their new implanted impulses without knowing it. The penetrating rays are not felt. The body's impulses are changed and each body processes those impulses as it's own. Each person (even thousands at a time) follow those impulses as their own. They are not the same, they are then different, 'electrically produced', just like the Frankenstein monster and that is why that book was written. Each time the ANCIENT ORDER shows this system, they make people believe it is new when in fact it is well over one hundred and fifty (150) years old.

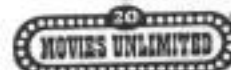
● What sort of people would use such a system on other people? Nice, kind people? Why would nice people manipulate other people without their knowledge? What nice group of

Shelley (shĕl'ē), Mary Godwin Wollstonecraft, 1797-1851, British writer.

Frankenstein (1931) 70m. \*\*\*½ D: James Whale. Colin Clive, Mae Clarke, Boris Karloff, John Boles, Edward Van Sloan, Dwight Frye, Frederick Ken, Lionel Belmore. Definitive monster movie, with Clive as the ultimate mad scientist, creating a man-made being (Karloff) but inadvertently giving him a criminal brain. It's creepy at times, and cries for a music score, but it's still impressive... as is Karloff's performance in the role that made him a star. Long-censored footage, restored in 1987, enhance the impact of several key scenes, including the drowning of a little girl. Based on Mary Shelley's novel. Followed by BRIDE OF FRANKENSTEIN. ♥

Frankenstein (1931)  
One of the all-time classics, Boris Karloff became a screen legend for his portrayal of the monster brought to life by mad scientist Colin Clive. With Mae Clarke, Dwight Frye, Edward Van Sloan, restored version contains scenes not shown since the film's original release (how did that get in the library?). 71 min.  
07-1526 SALE! \$70.99

Call Toll-Free 1-800-6-MOVIES



alpha rhythm also alpha wave n. A pattern of regular electrical oscillations occurring in the brain at a frequency of 8 to 13 hertz when a person is awake and relaxed.

beta rhythm also beta wave n. A pattern of electrical oscillations occurring in the brain at a frequency of 13 to 30 hertz when a person is awake and alert.

Im-pulse (im'puls') n.

4. *Physiol.* The electrochemical transmission of a signal along a nerve fiber that produces a response at a target tissue. [Lat. *impulsus* < p. part. of *impellere*, *impel.*]

10-15-99